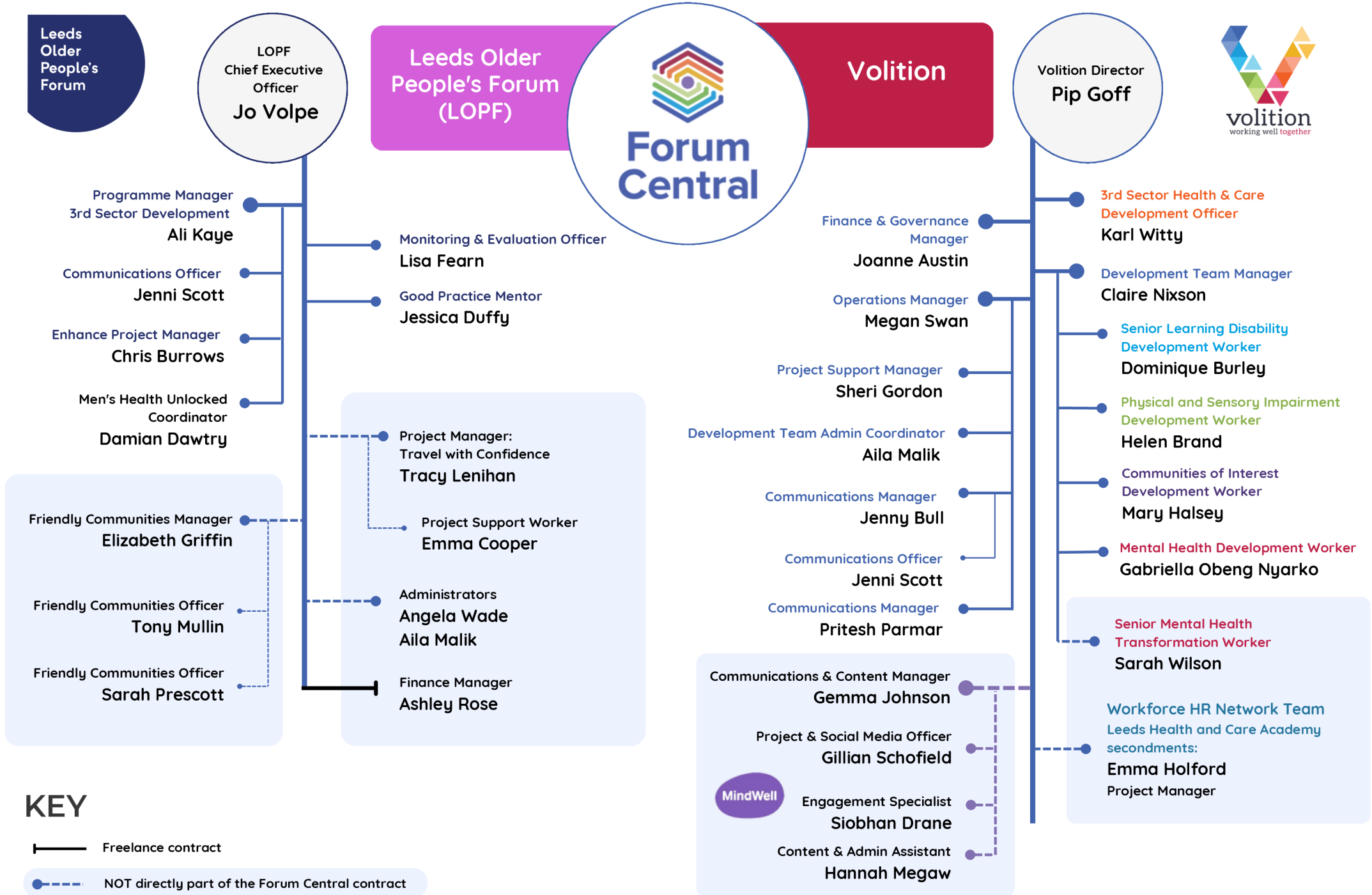
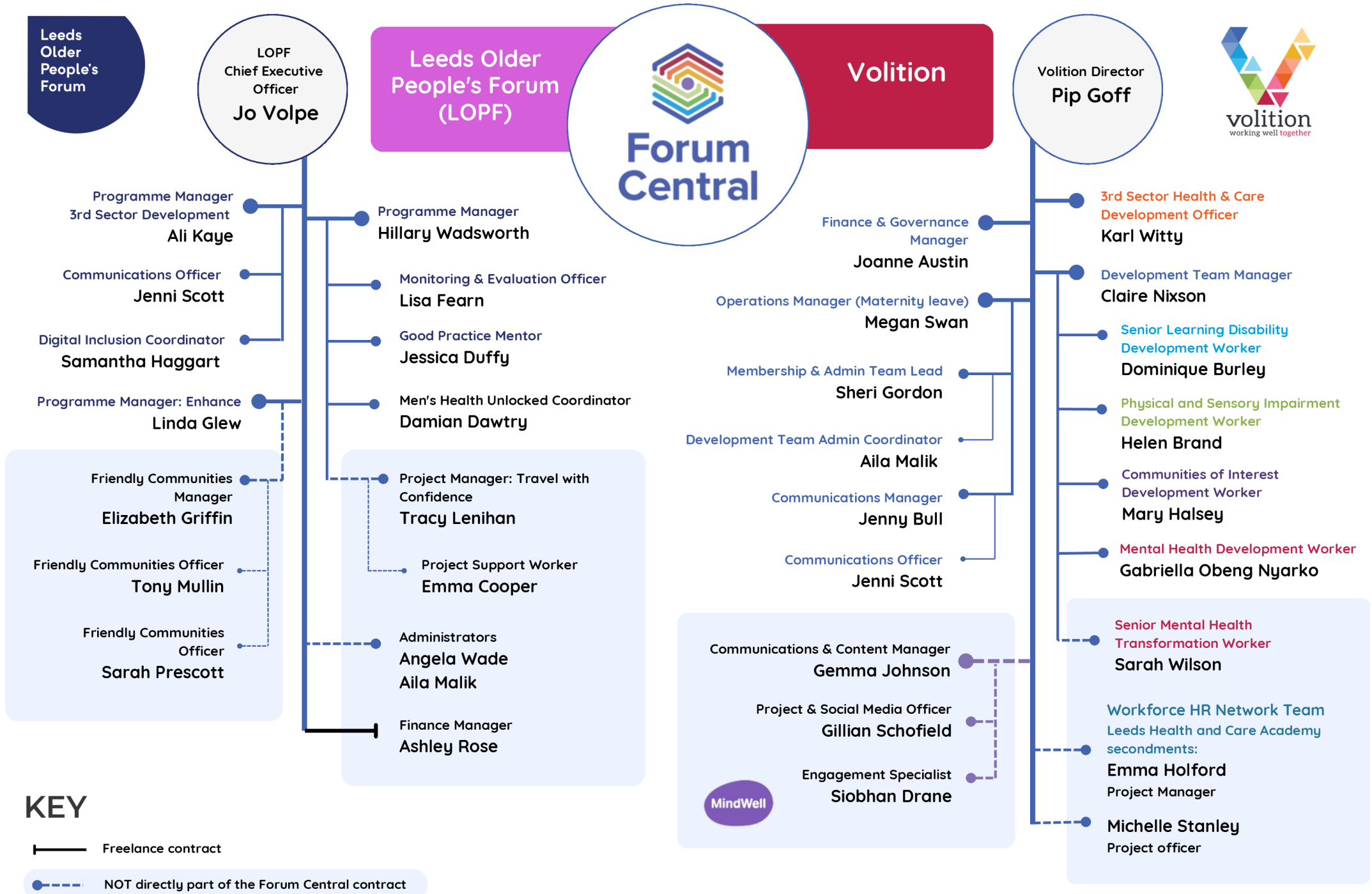


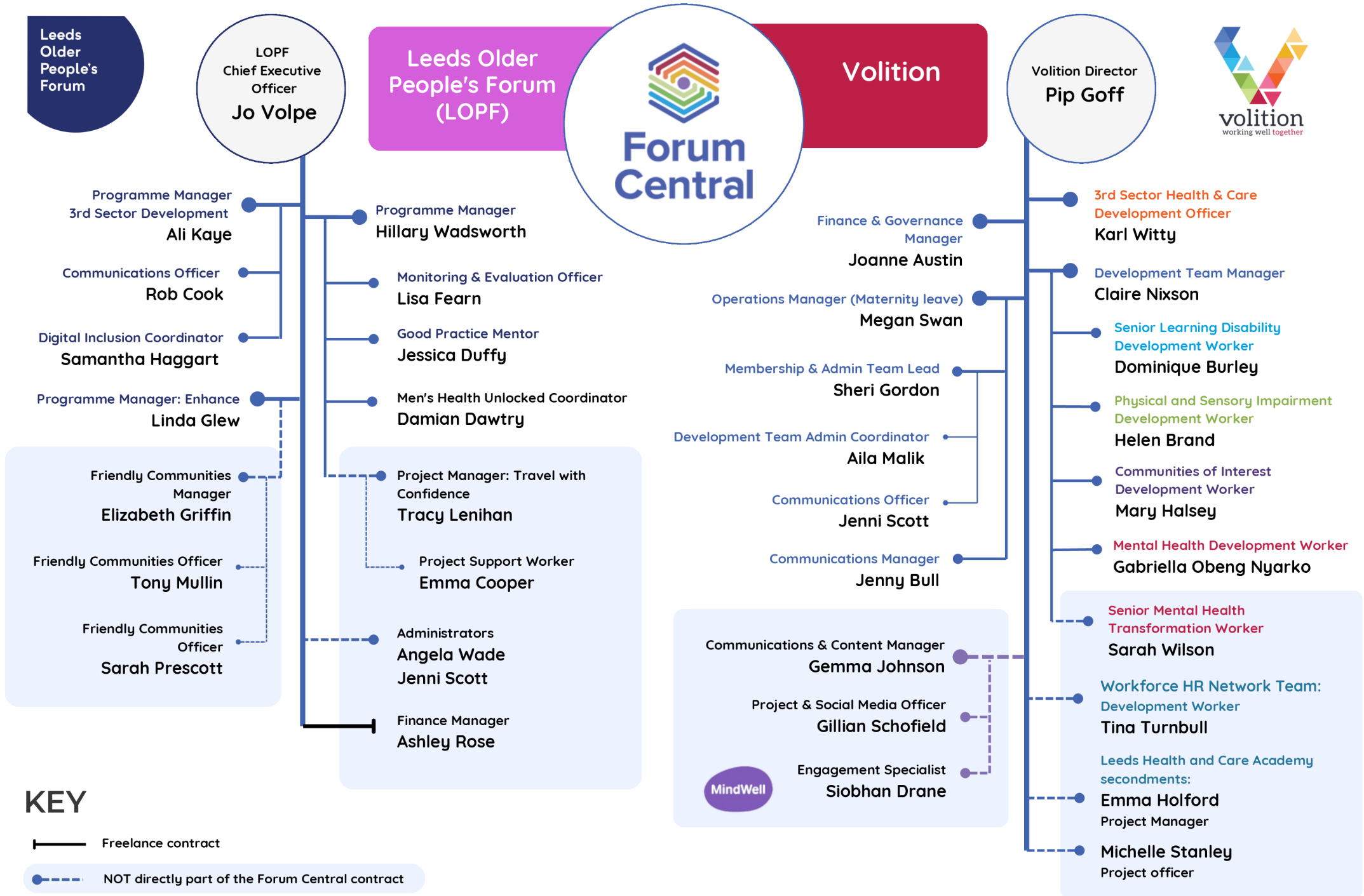
Forum Central Partnership Team Tree



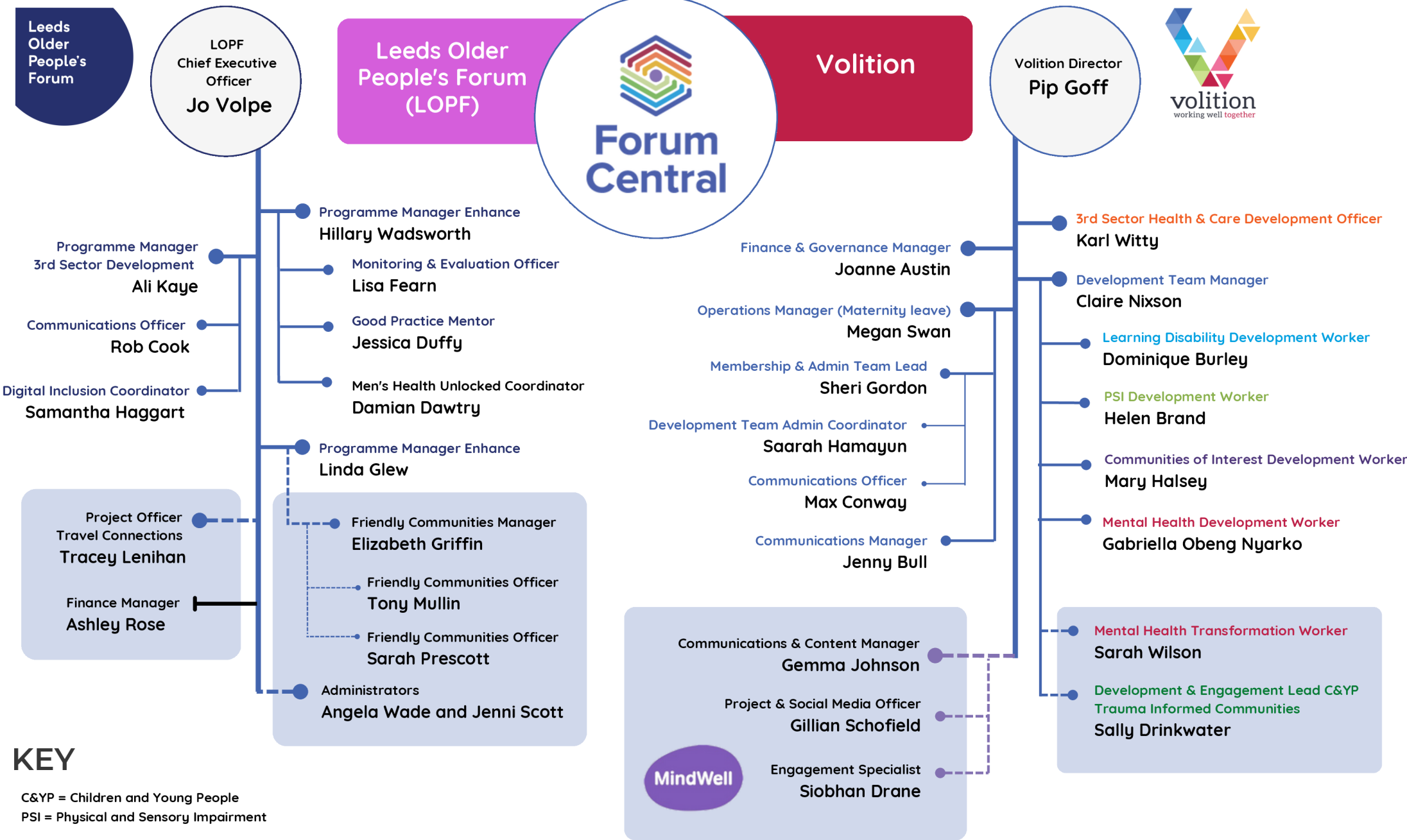
Forum Central Partnership Team Tree



Forum Central Partnership Team Tree



Forum Central Partnership Team Tree



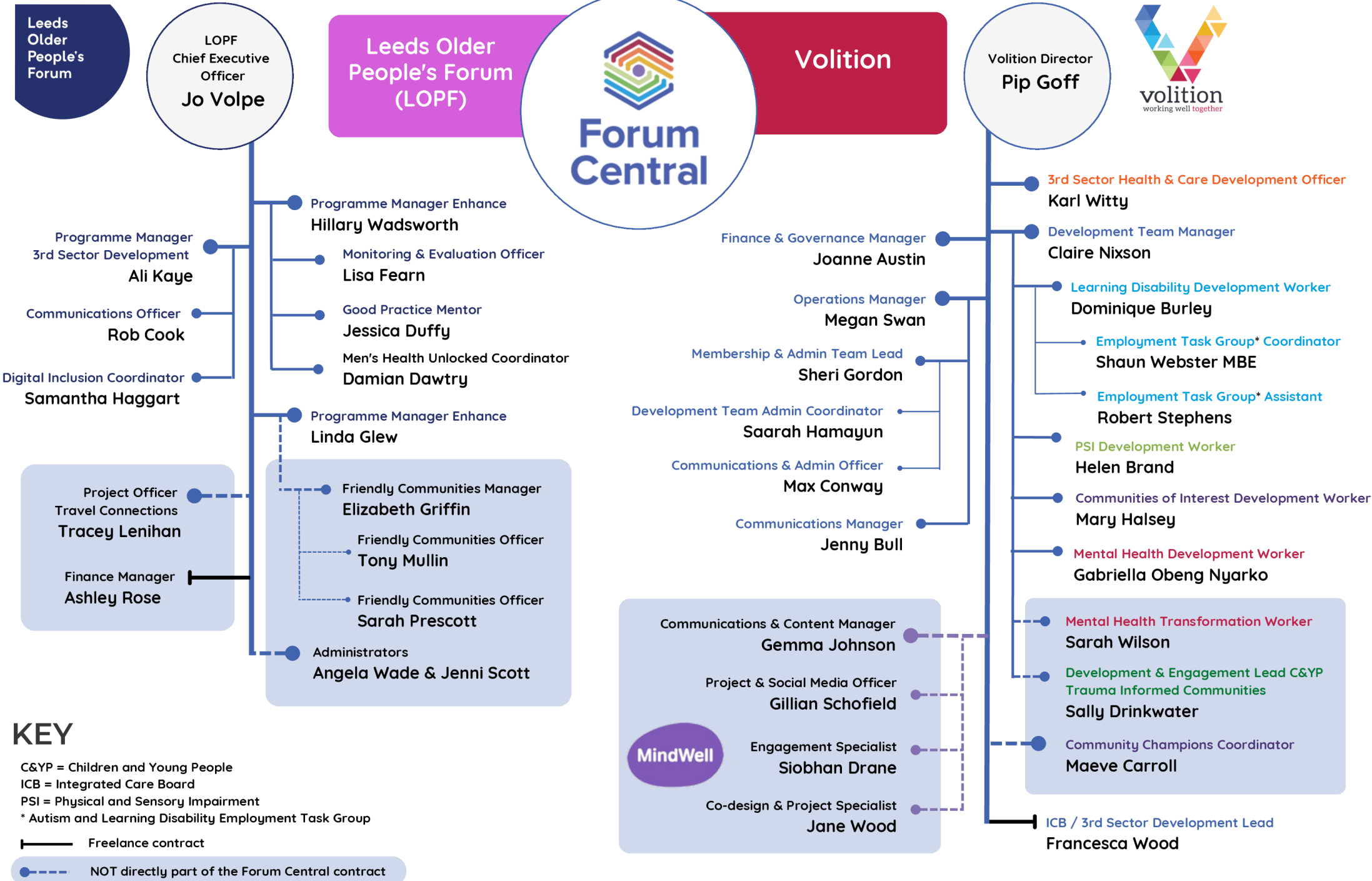
KEY

C&YP = Children and Young People
PSI = Physical and Sensory Impairment

— Freelance contract

● - - - NOT directly part of the Forum Central contract

Forum Central Partnership Team Tree



Forum Central Partnership Team Tree

Leeds Older People's Forum

LOPF
Chief Executive Officer
Jo Volpe

Leeds Older People's Forum (LOPF)



Volition

Volition Director
Pip Goff



- Programme Manager Enhance
Hillary Wadsworth
- Monitoring & Evaluation Officer
Lisa Fearn
- Good Practice Mentor
Jessica Duffy
- Men's Health Unlocked Coordinator
Damian Dawtry
- Programme Manager Enhance
Linda Glew
- Friendly Communities Manager
Elizabeth Griffin
- Friendly Communities Officer
Tony Mullin
- Friendly Communities Officer
Sarah Prescott
- Administrators
Angela Wade & Jenni Scott
- Programme Manager 3rd Sector Development
Ali Kaye
- Communications Officer
Rob Cook
- Digital Inclusion Coordinator
Samantha Haggart
- Project Officer Travel Connections
Tracey Lenihan
- Finance Manager
Ashley Rose

- Finance & Governance Manager
Joanne Austin
- Operations Manager
Liv Barnes
- Membership & Admin Team Lead
Megan Swan
- Development Team Admin Coordinator
Saarah Hamayun
- Communications & Admin Officer
Max Conway
- Communications Manager
Jenny Bull
- Communications Officer (Temporary)
Soo Lincoln

- Communications & Content Manager
Gemma Johnson
- Project & Social Media Officer
Gillian Schofield
- Engagement Specialist
Siobhan Drane
- Co-design & Project Specialist
Jane Wood

- 3rd Sector Health & Care Development Officer
Karl Witty
- Development Team Manager
Claire Nixon
- Learning Disability Development Worker
Dominique Burley
- Employment Task Group* Coordinator
Shaun Webster
- Employment Task Group* Assistant
Robert Stephens
- PSI Development Worker
Helen Brand
- Communities of Interest Development Worker
Mary Halsey
- Mental Health Development Worker
Gabriella Obeng Nyarko
- Mental Health Transformation Worker
Sarah Wilson
- Development & Engagement Lead C&YP Trauma Informed Communities
Sally Drinkwater
- Community Champions Coordinator
Maeve Carroll
- ICB / 3rd Sector Development Lead
Francesca Wood

KEY

C&YP = Children and Young People
ICB = Integrated Care Board
PSI = Physical and Sensory Impairment
* Autism and Learning Disability Employment Task Group

- Freelance contract
- - - - NOT directly part of the Forum Central contract

Forum Central Partnership Team Tree

Leeds Older People's Forum

LOPF
Chief Executive Officer
Jo Volpe

Leeds Older People's Forum (LOPF)



Volition

Volition Director
Pip Goff



- Programme Manager Enhance **Hillary Wadsworth**
- Monitoring & Evaluation Officer **Lisa Fearn**
- Good Practice Mentor **Jessica Duffy**
- Men's Health Unlocked Coordinator **Damian Dawtry**
- Programme Manager Enhance **Linda Glew**
- Friendly Communities Manager **Elizabeth Griffin**
- Friendly Communities Officer **Tony Mullin**
- Friendly Communities Officer **Sarah Prescott**
- Administrators **Angela Wade & Jenni Scott**
- Programme Manager 3rd Sector Development **Ali Kaye**
- Communications Officer **Rob Cook**
- Digital Inclusion Coordinator **Samantha Haggart**
- Project Officer Travel Connections **Tracey Lenihan**
- Finance Manager **Ashley Rose**

- Finance & Governance Manager **Joanne Austin**
- Operations Manager **Liv Barnes**
- Membership & Admin Team Lead **Megan Swan**
- Development Team Admin Coordinator **Saarah Hamayun**
- Communications & Admin Officer **Max Conway**
- Interim Communications Manager **Angela Davies (cover for Jenny Bull)**
- Communications Officer (Temporary) **Soo Lincoln**

- Communications & Content Manager **Gemma Johnson**
- Project & Social Media Officer **Gillian Schofield**
- Engagement Specialist **Siobhan Drane**
- Co-design & Project Specialist **Jane Wood**

- 3rd Sector Health & Care Development Officer **Karl Witty**
- Development Team Manager **Claire Nixson**
- Learning Disability Development Worker **Dominique Burley**
- Employment Task Group* Coordinator **Vacancy**
- Employment Task Group* Assistant **Robert Stephens**
- PSI Development Worker **Helen Brand**
- Communities of Interest Development Worker **Mary Halsey**
- Mental Health Development Worker **Gabriella Obeng Nyarko**
- Mental Health Transformation Worker **Sarah Wilson**
- Development & Engagement Lead C&YP Trauma Informed Communities **Sally Drinkwater**
- Community Champions Coordinator **Maeve Carroll**
- ICB / 3rd Sector Development Lead **Francesca Wood**

KEY

C&YP = Children and Young People
ICB = Integrated Care Board
PSI = Physical and Sensory Impairment
* Autism and Learning Disability Employment Task Group

- Freelance contract
- - - - NOT directly part of the Forum Central contract

Forum Central Partnership Team Tree

Leeds Older People's Forum

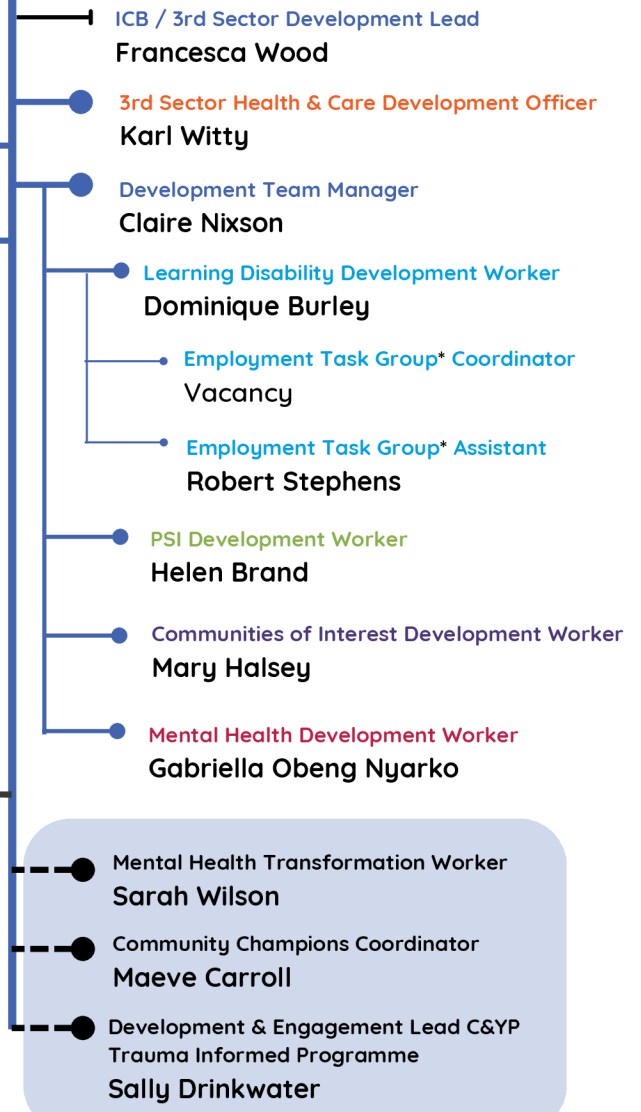
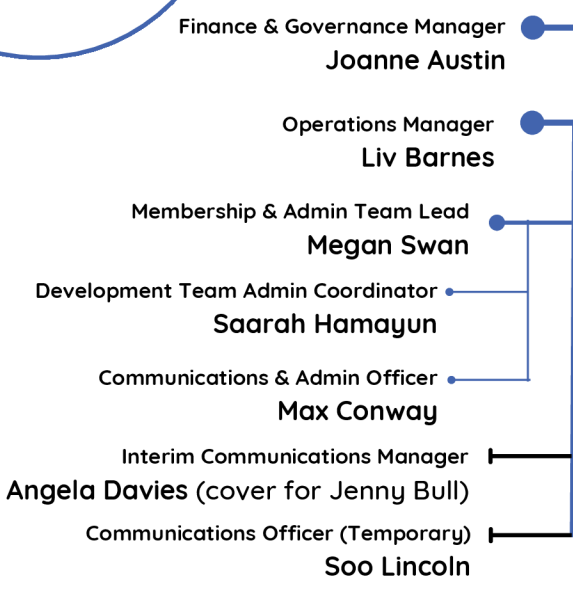
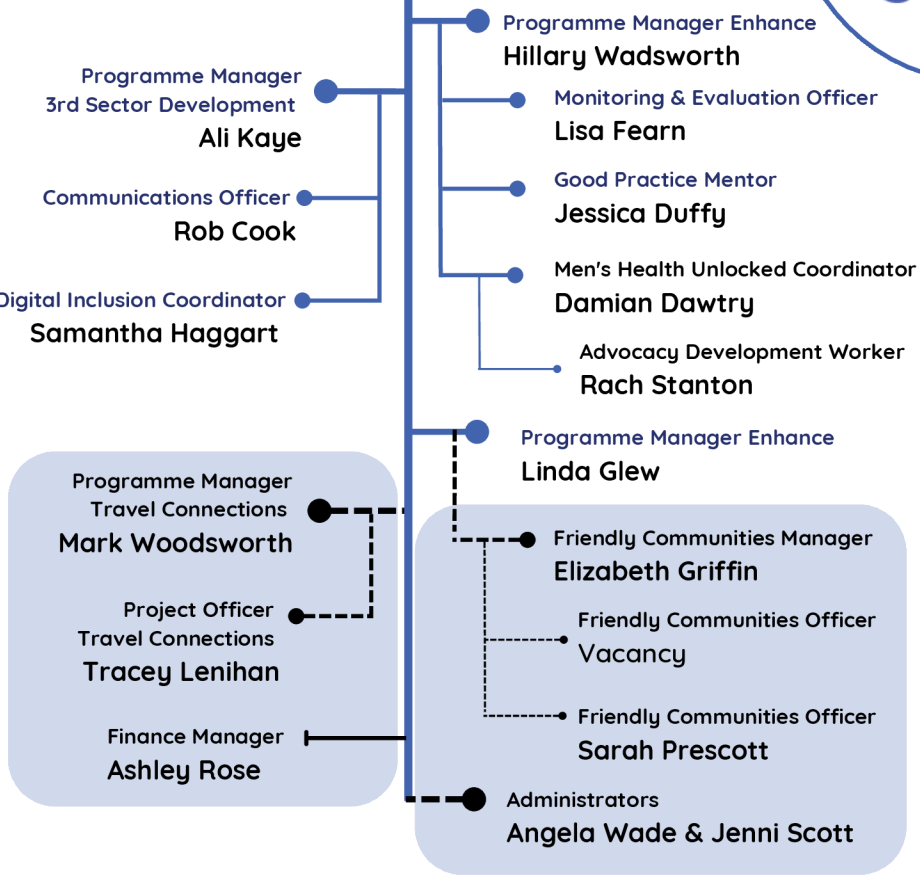
LOPF
Chief Executive Officer
Jo Volpe

Leeds Older People's Forum (LOPF)



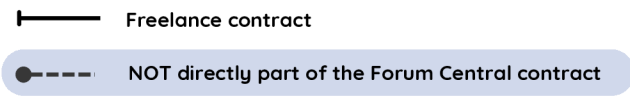
Volition

Volition Director
Pip Goff



KEY

C&YP = Children and Young People
ICB = Integrated Care Board
PSI = Physical and Sensory Impairment
* Autism and Learning Disability Employment Task Group



Forum Central Partnership Team Tree

Leeds Older People's Forum

LOPF
Chief Executive Officer
Jo Volpe

Leeds Older People's Forum (LOPF)



Volition

Volition Director
Pip Goff



- Programme Manager Enhance **Hillary Wadsworth**
 - Monitoring & Evaluation Officer **Lisa Fearn**
 - Good Practice Mentor **Jessica Duffy**
 - Men's Health Unlocked Coordinator **Damian Dawtry**
 - Advocacy Development Worker **Rach Stanton**
- Programme Manager Enhance **Linda Glew**
 - Friendly Communities Manager **Elizabeth Griffin**
 - Friendly Communities Officer **Rachel Standish**
 - Friendly Communities Officer **Sarah Prescott**
- Administrators **Angela Wade & Jenni Scott**
- Programme Manager 3rd Sector Development **Ali Kaye**
- Communications Officer **Rob Cook**
- Digital Inclusion Coordinator **Samantha Haggart**
- Programme Manager Travel Connections **Mark Woodsworth**
- Project Officer Travel Connections **Tracey Lenihan**
- Finance Manager **Ashley Rose**

- Finance & Governance Manager **Joanne Austin**
- Operations Manager **Liv Barnes**
- Membership & Admin Team Lead **Megan Swan**
- Development Team Admin Coordinator **Saarah Hamayun**
- Admin & Finance Assistant **Vacancy**
- Communications & Admin Officer **Max Conway**
- Interim Communications Manager **Angela Davies (cover for Jenny Bull)**
- Communications Officer (Temporary) **Soo Lincoln**

- Communications & Content Manager **Gemma Johnson**
- Project & Social Media Officer **Gillian Schofield**
- Engagement Specialist **Siobhan Drane**
- Co-design & Project Specialist **Jane Wood**

- ICB / 3rd Sector Development Lead **Francesca Wood**
- 3rd Sector Health & Care Development Officer **Karl Witty**
- Development Team Manager **Claire Nixson**
- Learning Disability Development Worker **Dominique Burley**
- Employment Task Group* Coordinator **Vacancy**
- Employment Task Group* Assistant **Robert Stephens**
- PSI Development Worker **Helen Brand**
- Communities of Interest Development Worker **Mary Halsey**
- 3rd Sector Representatives Development Worker **Vacancy**
- Mental Health Development Worker **Gabriella Obeng Nyarko**
- Mental Health Transformation Worker **Sarah Wilson**
- Community Champions Coordinator **Maeve Carroll**
- Development & Engagement Lead C&YP Trauma Informed Programme **Sally Drinkwater**

KEY

- C&YP = Children and Young People
- ICB = Integrated Care Board
- PSI = Physical and Sensory Impairment
- * Autism and Learning Disability Employment Task Group
- Freelance contract
- - - - NOT directly part of the Forum Central contract

Forum Central Partnership Team Tree



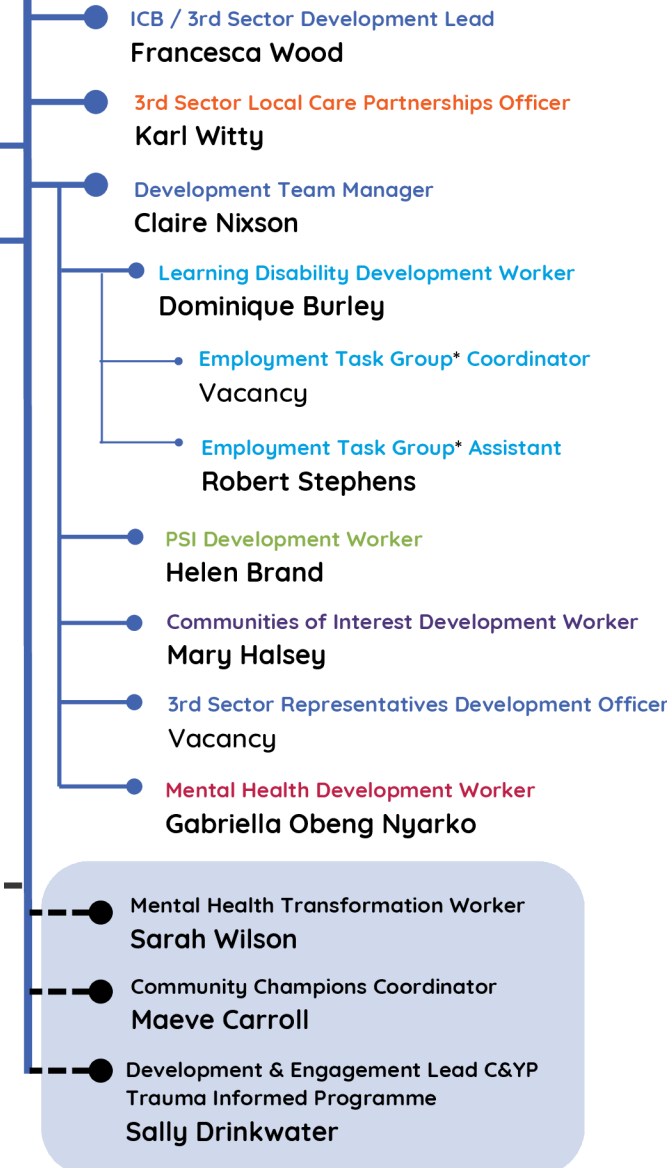
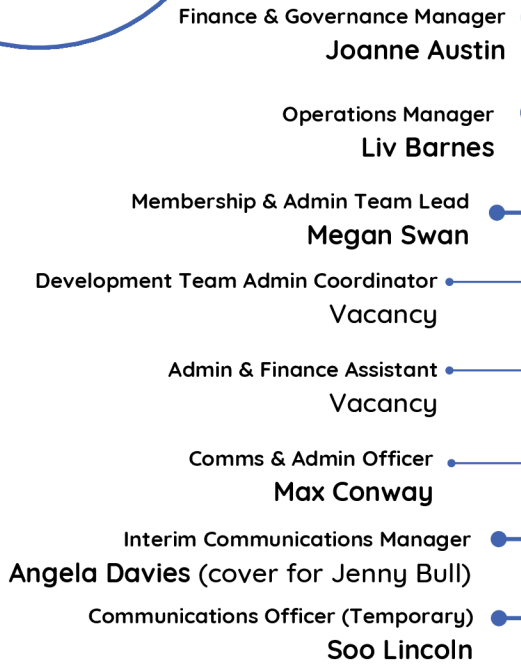
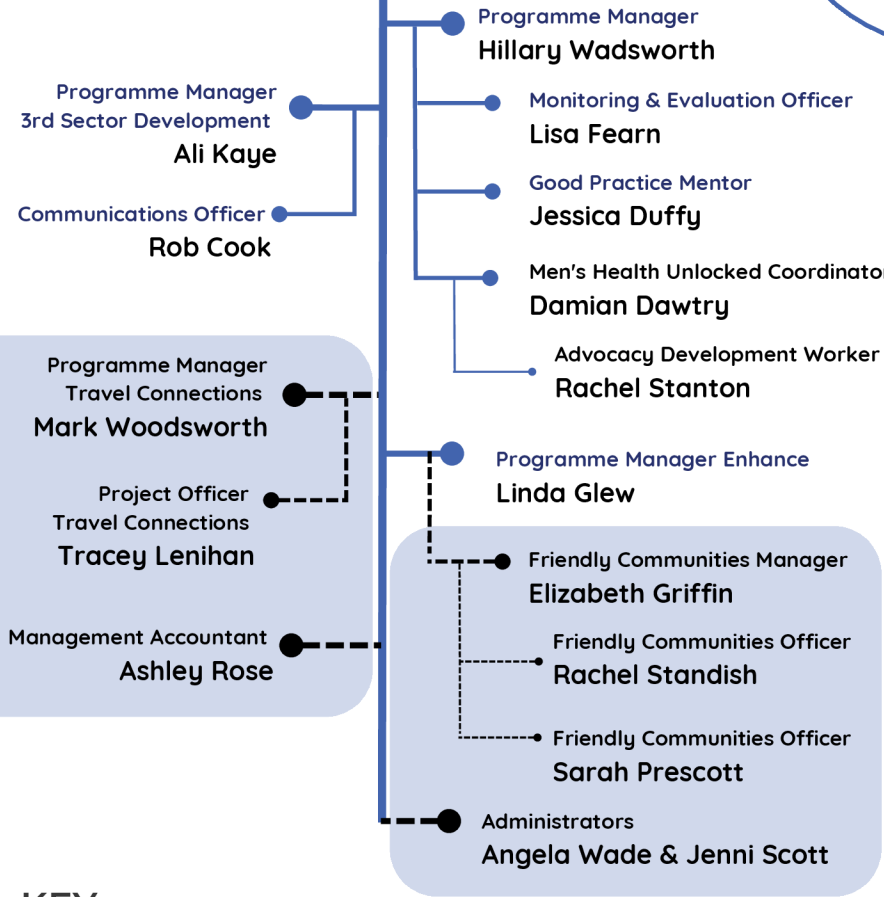
LOPF
Chief Executive
Officer
Jo Volpe

Leeds Older
People's Forum
(LOPF)



Volition

Volition Director
Pip Goff



KEY

● - - - NOT directly part of the Forum Central contract

C&YP = Children and Young People
ICB = Integrated Care Board
PSI = Physical and Sensory Impairment
* Autism and Learning Disability Employment Task Group

Forum Central Partnership Team Tree



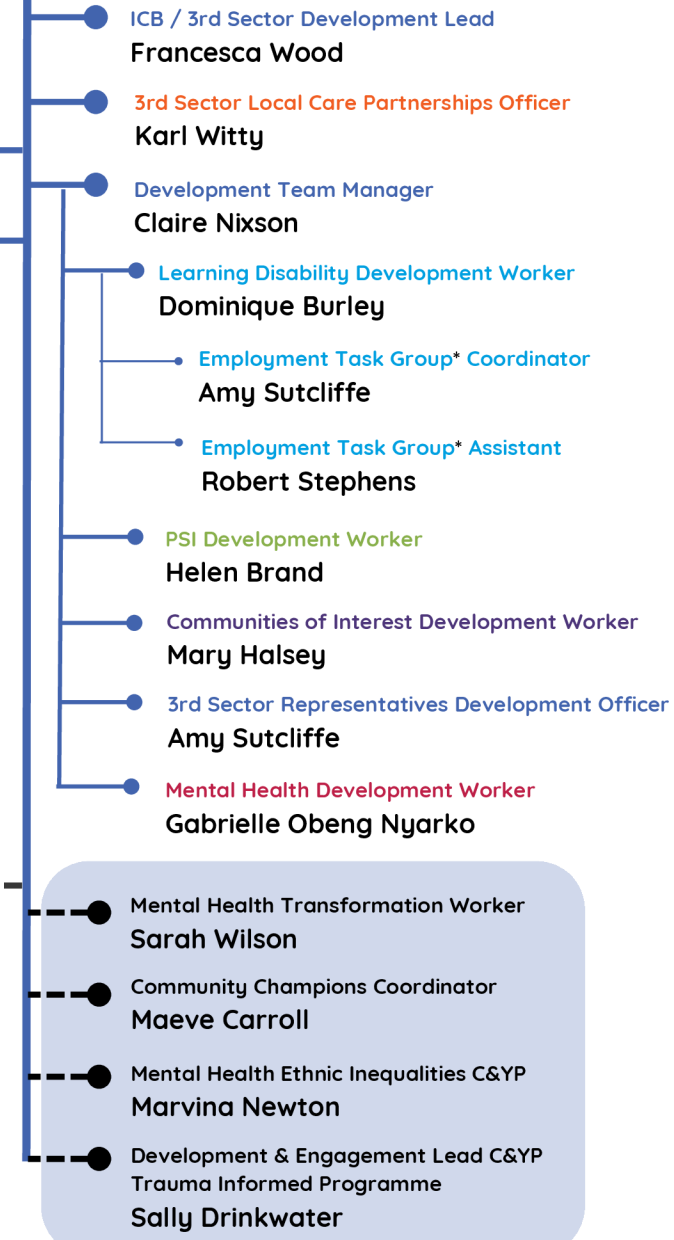
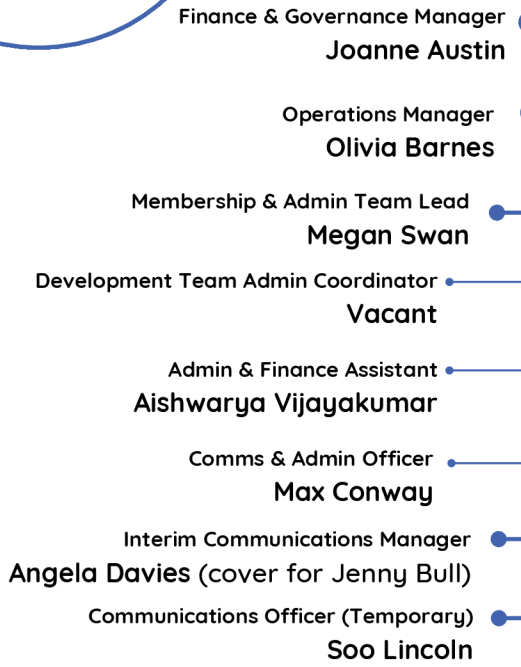
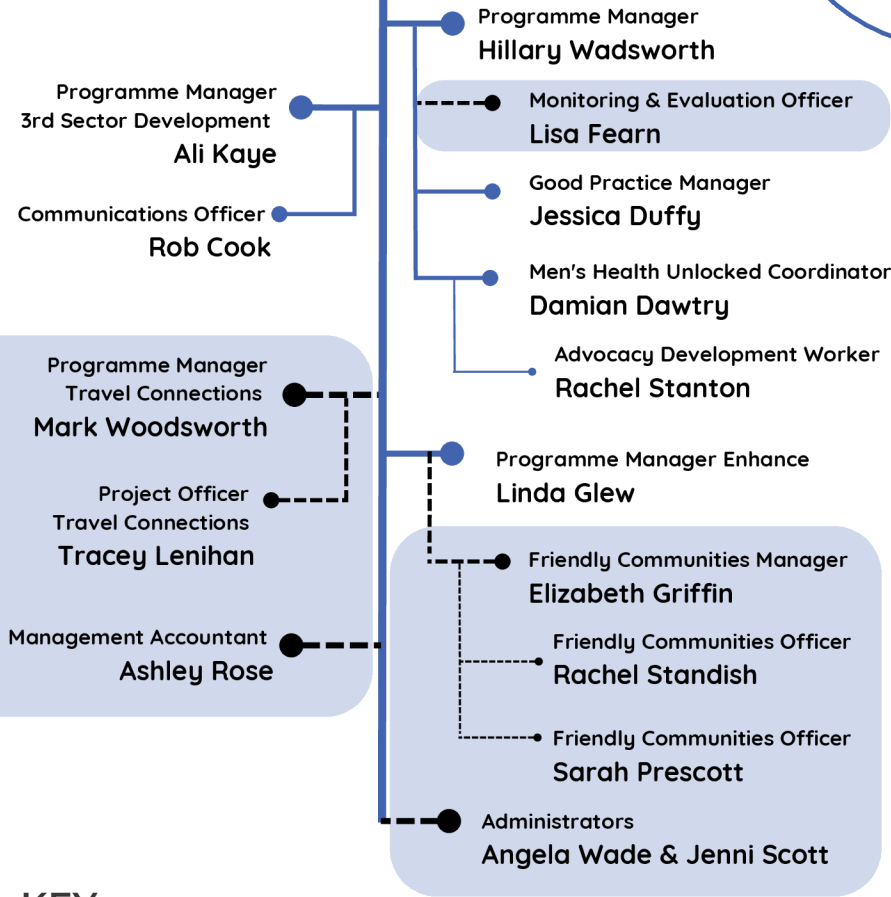
LOPF
Chief Executive
Officer
Jo Volpe

Leeds Older
People's Forum
(LOPF)



Volition

Volition Director
Pip Goff



KEY

● - - - NOT directly part of the Forum Central contract

C&YP = Children and Young People
ICB = Integrated Care Board
PSI = Physical and Sensory Impairment
* Autism and Learning Disability Employment Task Group

Forum Central Partnership Team Tree



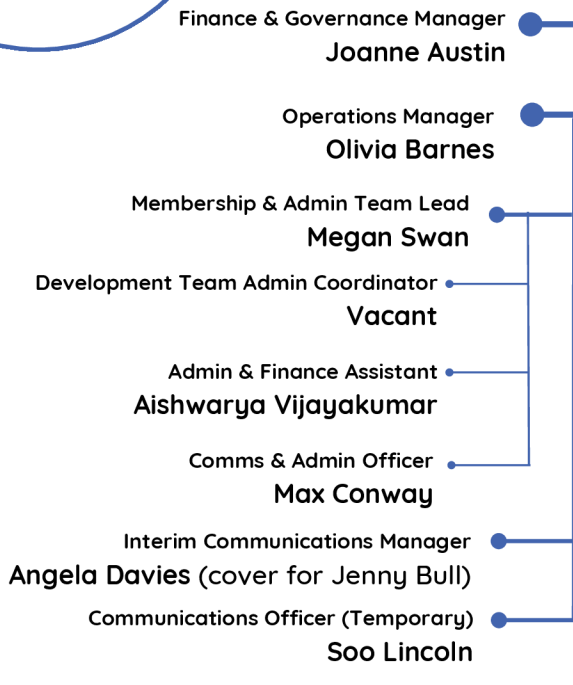
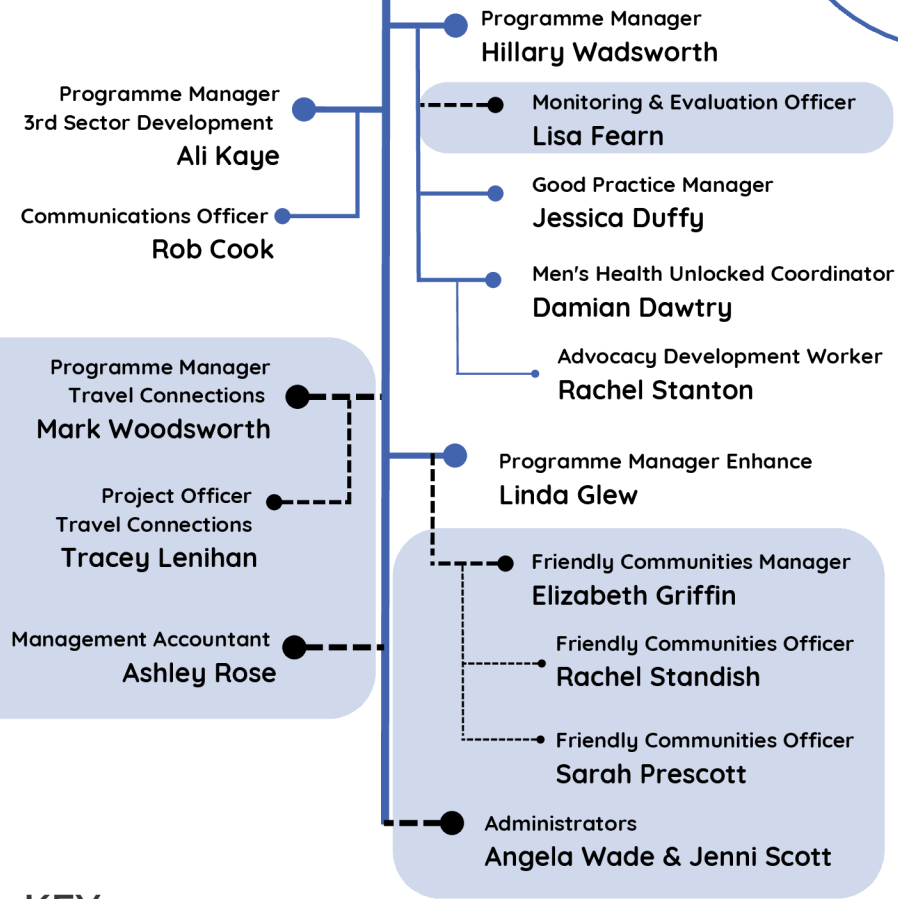
LOPF
Chief Executive
Officer
Jo Volpe

Leeds Older
People's Forum
(LOPF)



Volition

Volition Director
Pip Goff



KEY

● - - - NOT directly part of the Forum Central contract

C&YP = Children and Young People
ICB = Integrated Care Board
PSI = Physical and Sensory Impairment
* Learning Disability and Autism Employment Task Group